

**BEIXIER**

Our quest is: It's all about precision  
Our wish is: The health of the people

## Urine Trypsinogen-2 Test Kit (immunochromatography)

It is used to detect the concentration of Trypsinogen-2(TPS-2) in human urine samples in vitro. It is mainly used to diagnose acute abdomen patients with acute pancreatitis.

**First Urine Trypsinogen-2**



✕ Easy  
✕ Convenient  
✕ Fast  
✕ Non-invasive

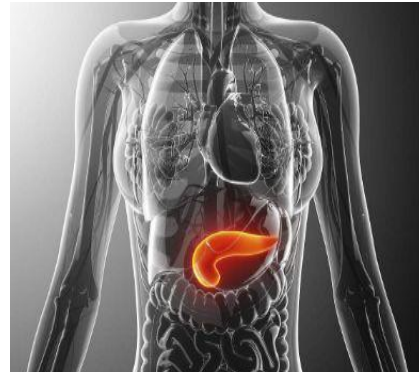
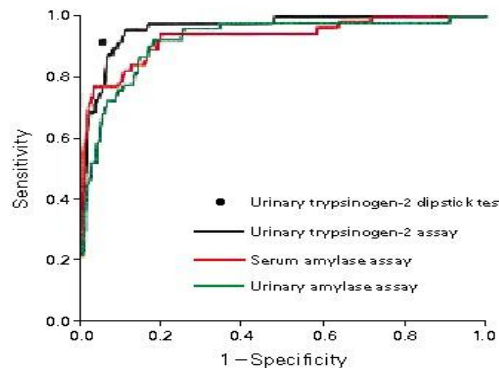
- ✕ Acute pancreatitis is a disease characterized by pancreatic enzyme activation, followed by local inflammation of the pancreas, with or without changes in the function of other organs. In 20% ~ 30% of patients, the overall mortality was 5% ~ 10% .
- ✕ Early diagnosis and treatment are very important.
- ✕ Special Note: simultaneous detection of Urine Trypsinogen 2 and blood and urine amylase in the diagnosis of acute pancreatitis can improve the accuracy of acute pancreatitis screening and diagnosis.

Hunan Beixier Biotechnology Co., Ltd.

Production licence no. : 湘食药监械生产许 20190018 号

Medical Device Registration No. : 湘械注准 20202400200

TPS-2 is a type of Trypsinogen that is easily activated when a patient's body's defenses are attacked, particularly the acute pancreatitis Trypsinogen. The activated part of the Trypsinogen enters the blood, and the increased concentration of TPS-2 in the blood passes through glomerular filtration but is not reabsorbed by the renal tubules, resulting in a significant increase in the concentration of TPS-2 in the urine. The level of TPS-2 in urine began to increase 4 hours after onset, and the increase lasted for about 2 weeks.



Kemppainen et Al. found that the sensitivity and specificity of TPS 2  $\geq 50$  ng/mL in urine were 94% and 95% , respectively, for the diagnosis of acute pancreatitis.

Kemppainen et al. The New England Journal of Medicine 1997

Lempinen et Al. found that the sensitivity and specificity of TPS 2 concentration in urine were 62% and 87% , respectively, when it was higher than 2000 g/l in predicting the severity of pancreatitis. Therefore, 2000 g/l can be used as the critical value of TPS-2 in the urine of pancreatitis.

Lempinen et al. Clin Chem 2001

## Product benefits

Domestic scholars believe that the sensitivity of Trypsinogen 2 is higher than that of amylase in blood and urine, but there is no significant difference between specificity and amylase.

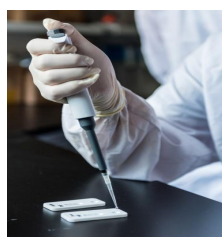
Indicators	Elevation time	Duration	Sensitivity	Degree of specificity
Urine Trypsinogen-2	4 hours after onset	Two weeks or so	94.4%	85.4%
Serum Amylase	It starts to rise 6-8 hours after onset	For 3-5 days	86.1%	81.5%
Urinary Amylase	Elevated 12-14 hours after onset	Lasting 1-2 weeks	88.8%	74.1%

Feng Cailian et Al. . Journal of Clinical Examination, 2019

## Product benefits



1 To collect urine



2 Sample addition (100μL)



3 Read the results



A. Qualitative: if the TPS-2 concentration in the sample (urine)  $\geq 50$ ng/mL, the detection line t can see the light red strip.

B. Quantitative: to obtain accurate quantitative results by instrumental examination.

Hunan Beixier Biotechnology Co. , Ltd.

Production address: room 504, building 8, jindaoyuan phase I industrial plant, No. 169, Huizhi Middle Road, high tech Development Zone, Changsha, Hunan, China

Contact: 073188305496, 13875932681

Web site : www.beirsw.com